

Technical Pages

ABSTRACT

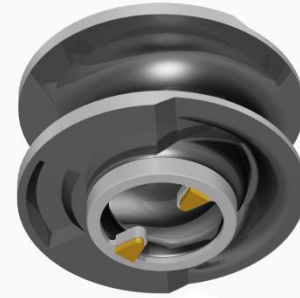
This document will identify the names of the components of the HOMA ASC cutter system. Please review them before placing a replacement order.

For particularly difficult applications, HOMA wastewater pumps with the ASC system are the optimal solution.

With non-compressible solids passage of up to 4"Ø and an upstream cutting system, the ASC system gives double protection against any obstruction of pumps, fittings or pressure pipes.

The adjustable ASC cutting system consists of two rotating blades and one adjustable fixed blade in hard metal, and is available for single vane pumps in the 3", 4", and 6" ranges as well as two vane pumps in the 4" and 6" series. The ASC system can also be retrofitted to existing installations.

For assistance in selecting the best solution for your application, please contact your local HOMA representative.



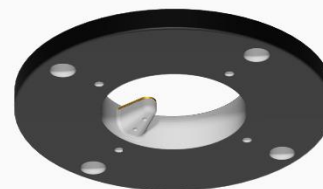
Enclosed Non-Clog Impeller With Two Hardened Slicer Blades



Bronze Wear Ring



Class 40 Cast Iron Pump Volute



Adjustable Cutter Plate With Hardened Slicer Blade