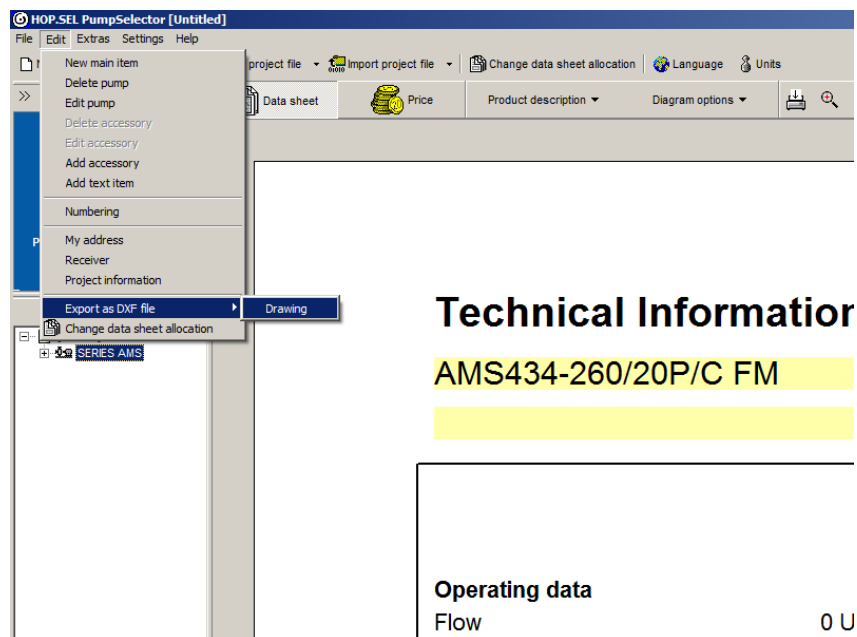


## Technical Pages

### PROCEDURE

Using Hopsel, it is easy to extract a representative AutoCAD file of your desired pump and installation arrangement. Simply follow the below steps.

1. Using either the Hydraulic Selection or the Product Selection Browser, select your desired pump model, motor, and installation type (e.g. wet pit installation on autocoupling)
2. Click the **Select** button on the bottom of the screen, then the **Next** button
3. Locate the **Edit** menu on the top left of the screen and click to open it
4. Move your cursor over the **Export as DXF file** option, then click **Drawing**



5. Save the drawing to your desired location
6. Your file is now available for use in any supported AutoCAD program or viewer