

Original-Betriebsanleitung

EN - Original-Instruction Manual

HRS.../4, .../6
CHRS.../4, CHRS.../6



HOMA
PUMPEN MIT SYSTEM

Content

1.General Information	3
1.1. Declaration of Conformity.....	3
1.2. Preface	3
1.3. Proper use	3
1.4. Copyright	3
1.5. Warranty	3
2.Safety.....	5
2.1. Instructions and safety information	5
2.2 Guidelines used and CE certification	5
2.3. General safety	5
2.4. Operating personal	5
2.5. Electrical work	5
2.6. Operating procedure.....	6
2.7. Safety and control devices	6
2.8. Operation in an explosive atmosphere	6
2.9. Pumped fluids	6
3.General description	7
3.1. Application	7
3.2. Types of Use.....	7
3.3. Construction	7
4.Package, Transport, Storage	9
4.1. Delivery.....	9
4.2. Transport.....	9
4.3. Storage	9
4.4. Returning to the supplier	9
5.Installation and Start-Up	10
5.1. General	10
5.3. Start-Up	14
5.4. Electrical system	14
5.5. Motor protection.....	14
5.6. Operation with a static frequency converter	14
5.7. Activation types	14
6.Maintenance	15
6.1. General	15
6.2. Maintenance	15
6.3. Change of oil.....	16
7.Shutdown.....	17
7.1. Temporary shutdown.....	17
7.2. Final shutdown / storage	17
7.3. Restarting after an extended period of storage	17
8.Additional for FM submersible pumps.....	17
9.Connection of pumps and mixers.....	19
10.Declaration of Contamination	21

1. General Information

1.1. Declaration of Conformity

EC Declaration of conformity in line with the EC Machinery Directive 2006/42/EEC, Appendix II Part 1 A

Manufacturer Name and Address:

HOMA Pumpenfabrik GmbH
Industriestraße 1
53819 Neunkirchen – Seelscheid
Germany

We hereby declare, that

HRS...-4, -6
CHRS...-4, -6

are conform to the following relevant requirements:

Machinery Directive 2006/42/EC

Applied harmonized standards of which have been published in the official Journal of the EC

Responsible for compiling the technical documentation:

Vassilios Petridis
Head of Development and Production
HOMA Pumpenfabrik GmbH

This Declaration of Conformity was issued by:

Oberheister, 27/01/2020



Vassilios Petridis
Head of Development and Production
HOMA Pumpenfabrik GmbH

1.2. Preface

Dear Customer,

Thank you for choosing one of our company's products. You have purchased a product which has been manufactured to the latest technical standards. Read this operating and maintenance manual carefully before you first use it. This is the only way to ensure that the product is safely and economically used.

The documentation contains all the necessary specifications for the product, allowing you to use it properly. In addition, you will also find information on how to recognize potential dangers, reduce repair costs and downtime, and increase the reliability and working life of the product.

All safety requirements and specific manufacturer's requirements must be fulfilled before the product is put into operation. This operating and maintenance manual supplements any existing national regulations on industrial safety and accident prevention. This manual must also be accessible to personnel at all times and also be made available where the product is used.

1.3. Proper use

The HOMA products comply with the valid safety regulations and meet the demands of state-of-the-art technology. In the event of improper use, there is a danger to life for the user as well as for third parties. Moreover, the product and/or attachments may be damaged or destroyed.

It is important to ensure that the product is only operated in technically perfect condition and as intended. To do so, follow the operating instructions.

1.4. Copyright

This operation and maintenance manual has been copyrighted by the manufacturer. This operation and maintenance handbook is intended for the use by assembly, operating and maintenance personnel. It contains technical specifications and diagrams which may not be reproduced or distributed, either completely or in part, or used for any other purpose without the expressed consent of the manufacturer.

1.5. Warranty

Costs for removal and installation of the complained product at the installation place, costs for the ride of the mechanics to the location and from the installation place as well as costs for transport are not components of our warranty. Hereby arose costs, especially costs for checking and transport are bearing by the sender or operator of the pump. This is also valid for an asserted warranty claim if a check results that the unit works faultless and is free of defects. All products have a high quality standard. Each product is defeated by a strict technical end control before delivery. A warranty repair achieved by us does not extend the warranty period. Replaced spare parts give no reasons for a new warranty period. Extensive claims are excluded, especially such as diminution, change or compensation also for any kind of follow up damages.

In order to ensure that your guarantee claim is processed as efficiently as possible, please contact us or the appropriate sales representative.

Once your claim for a return has been agreed, you will receive a return certificate. Please then send the rejected product, carriage prepaid, to the factory together with the return certificate, proof of purchase and an indication of the damage. Claims made on grounds of damage caused in transit must be established and confirmed on delivery of the product by the express company, the railway company or the postal service.

1.5.1. General information

This chapter contains the general information on the warranty. Contractual agreements have the highest priority and are not superseded by the information in this chapter!

The manufacturer is obliged to correct any defects found in the products it sells, provided that the following requirements have been fulfilled:

- The defects are caused by the materials used or the way the product was manufactured or designed.
- The defects were reported in writing to the manufacturer within the agreed warranty period.
- The product was used only as prescribed.
- All safety and control devices were connected and inspected by authorized personnel.

If no other provisions have been made, the warranty period applies to the first 12 months after initial start-up or to a max. of 24 months after the delivery date. Other agreements must be made in writing in the order confirmation. These agreements will remain valid at least until the agreed warranty period of the product has expired.

1.5.2. Spare parts, add-ons and conversions

Only original spare parts as supplied by the manufacturer may be used for repairs, replacements, add-ons and conversions. Only these parts guarantee a long working life and the highest level of safety. These parts have been specially designed for our products. Self-made add-ons and conversions or the use of non-original spare parts can seriously damage the product and/or injure personnel.

1.5.3. Maintenance

The prescribed maintenance and inspection work should be carried out regularly. This work may only be carried out by qualified, trained and authorized personnel. The maintenance and inspection log supplied must be properly updated. This enables you to monitor the status of inspections and maintenance work. Quick repairs not listed in this operation and maintenance manual and all types of repair work may only be performed by the manufacturer and its authorized service centres.

1.5.4. Damage to the product

Damage as well as malfunctions that endanger safety must be eliminated immediately by authorized personnel. The product should only be operated if it is in proper working order. During the agreed warranty period, the product may only be repaired by the manufacturer or an authorized service workshop! The manufacturer reserves the right to recall the damaged product to the factory for inspection!

1.5.5. Exclusion from liability

No liability will be assumed for product damage if one or more of the following points apply:

- Incorrect design and on our part due to faulty and/or incorrect information provided by the operator or customer
- Non-compliance with the safety instructions, the regulations and the requirements set forth by German law and
 - this operating and maintenance manual
- Incorrect storage and transport
- Improper assembly/dismantling
- Improper maintenance
- Unqualified repairs
- Faulty construction site and/or construction work
- Chemical, electrochemical and electrical influences
- Wear

In case of a power failure or another technical failure, by which a proper operation of the pump is no longer guaranteed, it is essential to take care that damages by an overflow of the pump sump are prevented securely, for example, by installing a mains-independent alarm or other appropriate protective measures.

This means the manufacturer's liability excludes all liability for personal, material or financial injury.

1.5.6. Manufacturer's address

HOMA Pumpenfabrik GmbH
Industriestrasse 1
D-53819 Neunkirchen-Seelscheid
Phone: +49 2247 / 7020
Fax: +49 2247 / 70244
Email: info@homa-pumpen.de
Homepage: www.homapumpen.de

2. Safety

This chapter lists all the generally applicable safety instructions and technical information. Furthermore, every other chapter contains specific safety instructions and technical information. All instructions and information must be observed and followed during the various phases of the product's lifecycle (installation, operation, maintenance, transport etc.). The operator is responsible for ensuring that personnel follow these instructions and guidelines.

2.1. Instructions and safety information

This manual uses instructions and safety information for preventing injury and damage to property. To make this clear for the personnel, the instructions and safety information are distinguished as follows:

Each safety instruction begins with one of the following signal words:

- **Danger:** Serious or fatal injuries can occur!
- **Warning:** Serious injuries can occur!
- **Caution:** Injuries can occur!
- **Caution (Instruction without symbol):** Serious damage to property can occur, including irreparable damage!

Safety instructions begin with a signal word and description of the hazard, followed by the hazard source and potential consequences, and end with information on preventing it.

2.2 Guidelines used and CE certification

Our products are subject to

- various EC directives,
- various harmonized standards,
- various national standards.

Please consult the EU Declaration of Conformity for the precise information and the guidelines and norms in effect.

Also, various national standards are also used as a basis for using, assembling and dismantling the product. These include the German accident prevention regulations, VDE regulations, German Equipment Safety Law etc. The CE symbol is found either on the type plate or next to the type plate. The type plate is attached to the motor casing.

2.3. General safety

- Never work alone when installing or removing the product.
- The machine must always be switched off before any work is performed on it (assembly, dismantling, maintenance, installation). The machine must be disconnected from the electrical system and secured against being switched on again. All rotating parts must be at a standstill.
- The operator should inform his/her superior immediately should any defects or irregularities occur.
- It is of vital importance that the system is shut down immediately by the operator if any problems arise which may endanger safety of personnel.

Problems of this kind include:

- Failure of the safety and/or control devices
- Damage to critical parts
- Damage to electric installations, cables and insulation.
- Tools and other objects should be kept in a place reserved for them so that they can be found quickly.
- Sufficient ventilation must be provided in enclosed rooms.
- When welding or working with electronic devices, ensure that there is no danger of explosion.
- Only use fastening devices which are legally defined as such and officially approved.
- The fastening devices should be suitable for the conditions of use (weather, hooking system, load, etc). If these are separated from the machine after use, they should be expressly marked as fastening devices. Otherwise they should be carefully stored.
- Mobile working equipment for lifting loads should be used in a manner that ensures the stability of the working apparatus during operation.
- When using mobile working equipment for lifting non guided loads, measures should be taken to avoid tipping and sliding etc.
- Measures should be taken that no person is ever directly beneath a suspended load. Furthermore, it is also prohibited to move suspended loads over workplaces where people are present.
- If mobile working equipment is used for lifting loads, a second person should be present to coordinate the procedure if needed (for example if the operator's field of vision is blocked).
- The load to be lifted must be transported in such a manner that nobody can be injured in the case of a power cut. Additionally, when working outdoors, such procedures must be interrupted immediately if weather conditions worsen.
- These instructions must be strictly observed. Non-observance can result in injury or serious damage to property.

2.4. Operating personnel

All personnel who work on or with the product must be qualified for such work; electrical work, for example may only be carried out by a qualified electrician. The entire personnel must be of age.

Operating and maintenance personnel must also work according to local accident prevention regulations.

It must be ensured that personnel have read and understood the instructions in this operating and maintenance handbook; if necessary this manual must be ordered from the manufacturer in the required language.

2.5. Electrical work

Our electrical products are operated with alternating or industrial high-voltage current. The local regulations (e.g. VDE 0100) must be adhered to. The "Electrical connection" data sheet must be observed when connecting the product. The technical specifications must be strictly adhered to. If the machine has been switched off by a protective device, it must not be switched on again until the error has been corrected.



Beware of electrical current!
Incorrectly performed electrical work can result in fatal injury! This work may only be carried out by a qualified electrician.



Beware of damp!
Moisture penetrating cables can damage them and render them useless. Furthermore, water can penetrate into the motor and cause damage to the terminals or the winding. Never immerse cable ends in the pumped fluid or other liquids.

2.5.1. Electrical connection

When the machine is connected to the electrical control panel, especially when electronic devices such as soft startup control or frequency drives are used, the relay manufacturer's specifications must be followed in order to conform to EMC. Special separate shielding measures e.g. special cables may be necessary for the power supply and control cables. The connections may only be made if the relays meet the harmonized EU standards. Mobile radio equipment may cause malfunctions.



Beware of electromagnetic radiation! Electromagnetic radiation can pose a fatal risk for people with pacemakers. Put up appropriate signs and make sure anyone affected is aware of the danger.

2.5.2. Ground connection

Our products (machine including protective devices and operating position, auxiliary hoisting gear) must always be grounded. If there is a possibility that people can come into contact with the machine and the pumped liquid (e.g. at construction sites), the grounded connection must be additionally equipped with a fault current protection device. The electrical motors conform to motor protection class IP 68 in accordance with the valid norms.

2.6. Operating procedure

When operating the product, always follow the locally applicable laws and regulations for work safety, accident prevention and handling electrical machinery. To help to ensure safe working practice, the responsibilities of employees should be clearly set out by the owner. All personnel are responsible for ensuring that regulations are observed. Certain parts such as the rotor and propeller rotate during operation in order to pump the fluid. Certain materials can cause very sharp edges on these parts.



Beware of rotating parts! The moving parts can crush and sever limbs. Never reach into the pump unit or the moving parts during operation. Switch off the machine and let the moving parts come to a rest before maintenance or repair work!

2.7. Safety and control devices

Our products are equipped with various safety and control devices. These include, for example suction strainers, thermo sensors, sealed room monitor etc. These devices must never be dismantled or disabled. Equipment such as thermo sensors, float switches, etc. must be checked by an electrician for proper functioning before start-up (see the "Electrical Connection" data sheet).

Please remember that certain equipment requires a decoder device or relay to function properly, e.g. posistor and PT100 sensor. This decoder can be obtained from the manufacturer or a specialist electronics dealer. Personnel must be informed of the installations used and how they work.



Caution!
Never operate the machine if the safety and monitoring devices have been removed or damaged, or if they do not work.

2.8. Operation in an explosive atmosphere

Products marked as explosion-proof are suitable for operation in an explosive atmosphere. The products must meet certain guidelines for this type of use. Certain rules of conduct and guidelines must be adhered to by the operator as well. Products that have been approved for operation in an explosive atmosphere are marked as explosion-protected "Ex". In addition, an "Ex" symbol must be included on the type plate! When used in an explosive atmosphere, the additional chapter entitled "Explosion protection according to the ...standard" must be observed!

2.9. Pumped fluids

Each pumped fluid differs in regard to composition, corrosiveness, abrasiveness, TS content and many other aspects. Generally, our products can be used for many applications. For more precise details, see chapter 3, the machine data sheet and the order confirmation. It should be remembered that if the density, viscosity or the general composition change, this can also alter many parameters of the product.

When switching the product into another pumped fluid, observe the following points:

- Products which have been operated in sewage or waste water must be thoroughly cleaned with pure water or drinking water before use.
- Products which have pumped fluids which are hazardous to health must always be decontaminated before changing to a new fluid. Also clarify whether the product may be used in a different pumped fluid.
- With products which have been operated with a lubricant or cooling fluid (such as oil), this can escape into the pumped fluid if the mechanical shaft seal is defective.



Danger - explosive fluids!
It is absolutely prohibited to pump explosive liquids (e.g. gasoline, kerosene, etc.). The products are not designed for these liquids!

3. General description

3.1. Application

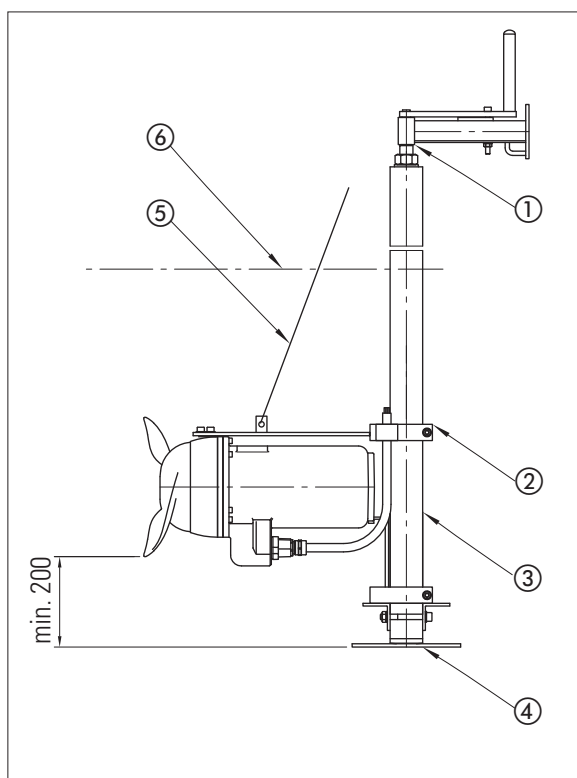
Submersible mixers are used for various applications such as mixing, homogenization and suspension of liquids with low to medium viscosity. Max. 6% liquids in the medium!

3.2. Types of Use

The motors are designed for continuous operation (S1), maximum 15 starts per hour.

3.3. Construction

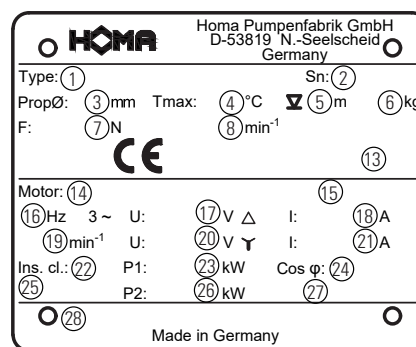
The pump consists of the motor and the pump housing as well as the propeller which belongs to it. All important parts of the pump are characterized by generous dimensioning.



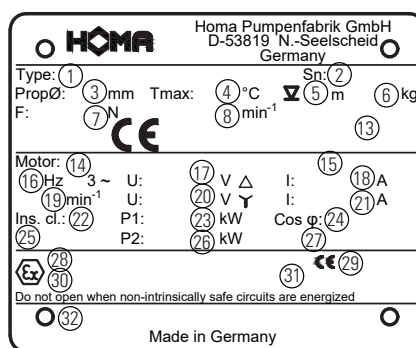
No.	Description
1	top guide bar with horizontal positioner
2	motor bracket
3	square guide bar
4	guide bar base
5	lifting rope
6	cover 1xØ propeller dia. minimum 500 mm

3.3.1. Type label

3 Ph



3 Ph Ex



No.	3 Ph	3 Ph Ex
1	Type description	Type description
2	Serial number	Serial number
3	Propeller diameter	Propeller diameter
4	Temperature of medium	Temperature of medium
5	Submersion depth	Submersion depth
6	Weight	Weight
7	Thrust	Thrust
8	Propeller speed	Propeller speed
13	Build year	Build year
14	Motor type	Motor type
15	IE Marking	IE Marking
16	Frequency	Frequency
17	Voltage - triangel	Voltage - triangel
18	Nominal current - triangel	Nominal current - triangel
19	Motor RPM	Motor RPM
20	Voltage - Star Connection	Voltage - Star Connection
21	Nominal current Star connection	Nominal current Star connection
22	Insulation class	Insulation class
23	Power P1	Power P1
24	Cos phi	Cos phi
25	Protection class	Protection class
26	Power P2	Power P2
27	Operating class	Operating class
28	Text field sales	Ex-certification number
29		Ex-test lab
30		Ex-designation
31		Ex-i-power circuit details
32		Text field sales

3.3.2. Motor

The three-phase asynchronous motor is made from sheet metal with a double-varnished winding wire as well as the motor shaft with rotor package. The power supply cable is designed for the maximum mechanical load and is sealed against water pressure from the pumped liquid. The motor cable lead connections are sealed from the pumped liquid as well. The bearings used are permanently lubricated maintenance-free antifriction bearings.

All models are available with explosion proof motors.

General motor data	
Operating mode	S1
Insulation class	F (155°C)
Degree of protection	IP68
Cable length	10 m
Shaft sealing HRS	NBR
Bearing	one grooved ball bearing (suspension side) one double-row type angular ball bearing (propeller side)

3.3.3. Control devices

The pump is equipped with various safety and control devices:

Temperature Sensors

The mixers have a set of temperature sensors built in the stator windings.

Standard models have the sensors connected to the motor power supply cable, the wire ends marked T1 and T3. They must be connected to the safety circuit of the control box in order to provide an automatic re-start of the motor, when the motor cools. Explosion proof models with motors up to 15 kW have a set of temperature sensors built-in, with a higher switch-off temperature, connected to the motor cable, the wire ends marked T1 and T2. They must be connected to a special relay in the starter box in order to provide manual pump re-start. All explosion proof models have both sets of sensors built-in, as described above, with wire ends marked T1, T2, T3. They have to be connected accordingly as described above. The temperature sensor set must be connected to the switchgear unit so that it switches off if it overheats.

Check of Direction of Rotation

After the electrical connection has been made, check that the agitator propeller is rotating in the correct direction. As seen from the motor, the propeller must rotate clockwise. If you ordered a special version with left-hand drive, the propeller must turn counter-clockwise. If the direction of rotation of the agitator propeller is incorrect, transpose two of the three conductor phases (L1, L2, L3) coming directly from the mains.



Beware of rotating propeller!

The moving propeller can crush and sever limbs. Switch off the machine and let the moving parts come to a rest before maintenance or repair work!

Seal condition sensors oil chamber

Agitator motors in the HRS.../C and CHRS.../C series are fitted as standard with monitoring of the sealing of the oil barrier chamber. Two sensors monitor the conductivity of the oil filling. The sensors are to be connected via the connecting cables with the cable-end designations S1 and S2 in the switchgear to an evaluation instrument with a galvanically isolated sensor circuit (electrode relay). If the shaft seal leaks, water enters the oil chamber and changes the resistance of the oil. Response sensitivity should be adjustable from 0-100 kΩ. The standard setting is 50 kΩ. If this is an antiexplosion design, select electrode relays with intrinsically safe circuits for sensors.

Motor cooling

They are cooled by the surrounding liquid.

3.3.5. Propeller

A self cleaning propeller from stainless steel is used.

4. Package, Transport, Storage

4.1. Delivery

On arrival, the delivered items must be inspected for damage and a check made that all parts are present. If any parts are damaged or missing, the transport company or the manufacturer must be informed on the day of delivery. Any claim made at a later date will be deemed invalid. Damage to parts must be noted on the delivery or freight documentation.

4.2. Transport

Only the appropriate and approved fastening devices, transportation means and lifting equipment may be used. These must have sufficient load bearing capacity to ensure that the product can be transported safely. If chains are used they must be secured against slipping. The personnel must be qualified for the tasks and must follow all applicable national safety regulations during the work. The product is delivered by the manufacturer/shipping agency in suitable packaging. This normally precludes the possibility of damage occurring during transport and storage. The packaging should be stored in a safe place if the location used is changed frequently.

4.3. Storage

Newly supplied products are prepared that they can be stored for 1 year. The product should be cleaned thoroughly before interim storage.

The following should be taken into consideration for storage:

- Place the product on a firm surface and secure it against falling over. Submersible mixers and auxiliary lifting devices should be stored horizontally, submersible sewage pumps and submersible motor pumps should be stored horizontally or vertically. It should be ensured that they cannot bend if stored horizontally.



Danger from falling over!

Never put down the product unsecured. If the product falls over, injury can occur!

- The product has to be stored at a place free from vibrations and agitation to avoid damage from the ball bearings.
- It is also necessary to pay attention to the storage. The device should be stored in dry rooms without temperature fluctuation.
- The product may not be stored in rooms where welding work is conducted as the resulting gases and radiation can damage the elastomer parts and coatings.
- It is responsible to take care that the corrosion coating will not be spoiled
- Any suction or pressure connections on products should be closed tightly before storage to prevent impurities.
- The power supply cables should be protected against kinking, damage and moisture.



Beware of electrical current!

Damaged power supply cables can cause fatal injury! Defective cables must be replaced by a qualified electrician immediately.



Beware of damp!

Moisture penetrating cables can damage them and render them useless. Therefore, never immerse cable ends in the pumped fluid or other liquids.

- The machine must be protected from direct sunlight, heat, dust, and frost. Heat and frost can cause considerable damage to propellers, rotors and coatings.
- The rotors or propellers must be turned at regular intervals. This prevents the bearing from locking and the film of lubricant on the mechanical shaft seal is renewed. This also prevents the gear pinions (if present on the product) from becoming fixed as they turn and also renews the lubricating film on the gear pinions (preventing rust film deposits).



Beware of sharp edges!

Sharp edges can form on rotors and propellers. There is a risk of injuries. Wear protective gloves.

- If the product has been stored for a long period of time it should be cleaned of impurities such as dust and oil deposits before start-up. Rotors and propellers should be checked for smooth running, housing coating and damage.
- After storage longer than one year the oil of motor and, if necessary the gear have to be changed. This is also necessary if the product never had run (natural deterioration of mineral oil).

Before start-up, the filling levels (oil, cooling fluid etc.) of the individual products should be checked and topped up if required. Please refer to the machine data sheet for specifications on filling. Damaged coatings should be repaired immediately. Only a coating that is completely intact fulfills the criteria for intended usage!

If these rules are observed, your product can be stored for a longer period. Please remember that elastomer parts and coatings become brittle naturally. If the product is to be stored for longer than 6 months, we recommend checking these parts and replacing them as necessary. Please consult the manufacturer.

4.4. Returning to the supplier

Products which are delivered to the plant must be clean and correctly packaged. In this context, clean means that impurities have been removed and decontaminated if it has been used with materials which are hazardous to health. The packaging must protect the product against damage. Please contact the manufacturer before returning!

5. Installation and Start-Up

5.1. General

In order to prevent damage to the mixer or serious injury during installation the following points must be observed:

- Installation work may only be carried out by qualified persons. The safety instructions must be followed at all times.
- The mixer must be inspected for damages before any installation work is carried out.
- Protect the mixer from frost.
- The operating area must be laid out for each machine. You must ensure that lifting gear can be fitted without any trouble, since this is required for assembly and removal of the machine.
- The maximum bearing capacity must be greater than the weight of the machine, add-on units and cable.
- Electric power cables must be laid out in such a way that safe operation and non-problematic assembly/dismantling are possible at all times.
- The electric power cables should be fastened properly to the pipes with cable holders or other suitable equipment. This should prevent loose hanging and damage to the electric power cables. Depending on the cable length and weight, a cable holder should be fitted every two or three meters.
- The structural components and foundations must be of sufficient stability to ensure safe and functional operation. The operator or supplier is responsible for the provision.
- Never let the unit run dry.
- Use deflector plates for the pumped fluid intake that air cannot introduce into the pumped liquid. this will lead to that the pump will run smoothly and is subjected to higher wear and tear.

5.2. Installation



Danger of falling!

Installation work for the mixer and its accessories is performed directly on the edge of the basin. Carelessness or wearing inappropriate clothing could result in a fall. There is a risk of fatal injury! Take all necessary safety precautions to prevent this.

Mixer

The mixer is delivered ready assembled. During installation of the mixer please check the following:

Propeller

The propeller must not touch the tank floor or walls in any possible installation position (min. 20 cm distance).

Motor Cable

The cable must not be stretched even when the mixer is completely lowered. The cable should be positioned with always providing large bending radius in order to prevent breaking. The connecting cable should be guided as tight as possible towards the top, so it is not caught in the flow.

Operating Voltage / Direction Control

The operating voltage of the system is to check for conformity according to type plate data.

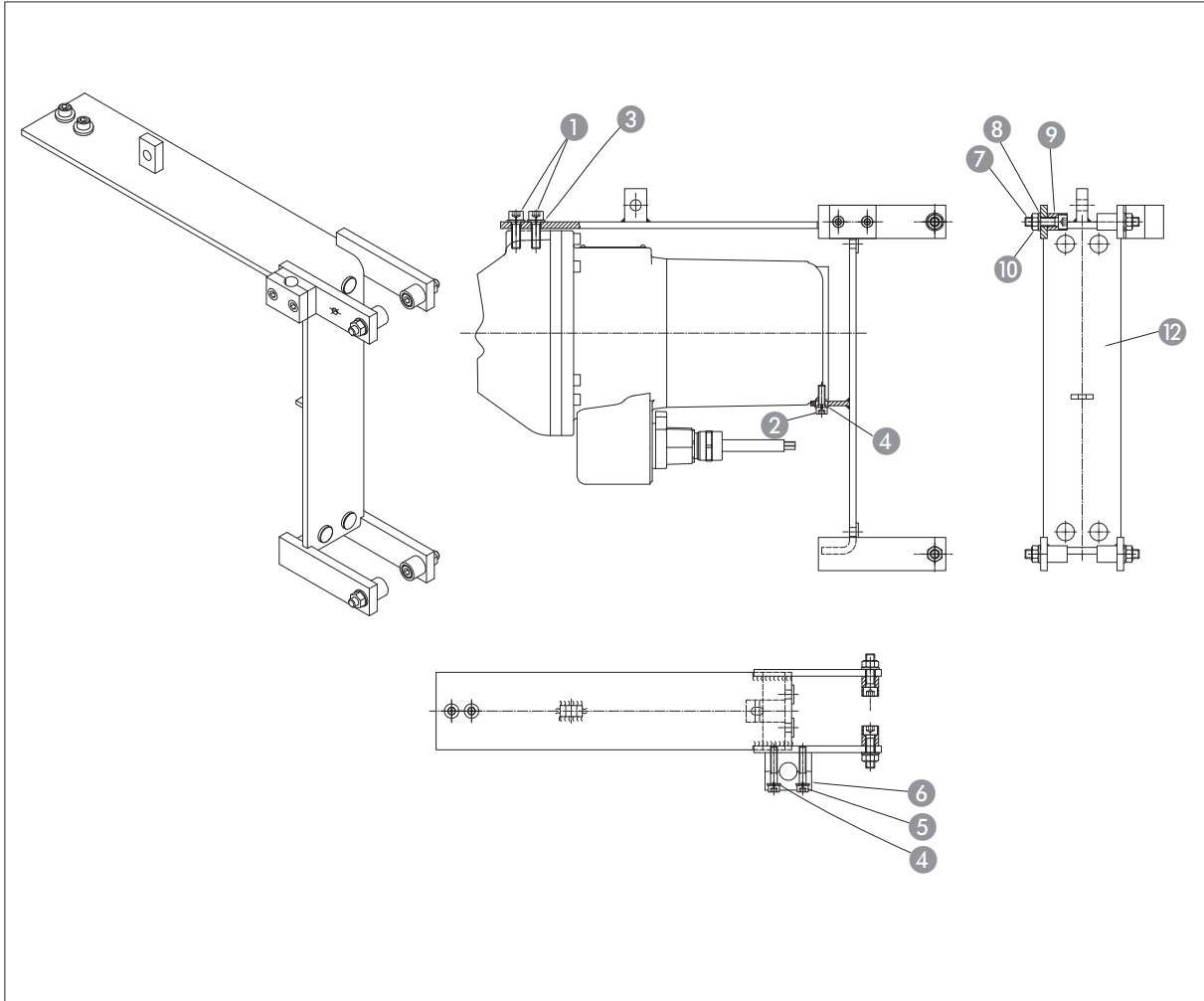
The protective cap located on the cable must be removed just before the electrical connection.

After electrical connection, the correct direction of the stirring propeller mixer must be inspected.

If the rotational direction of the stirring propeller is incorrect, two of the three conductor phases (L1, L2, L3) that are directly supplied from the mains must be interchanged.

Assembling the motor bracket to the mixer

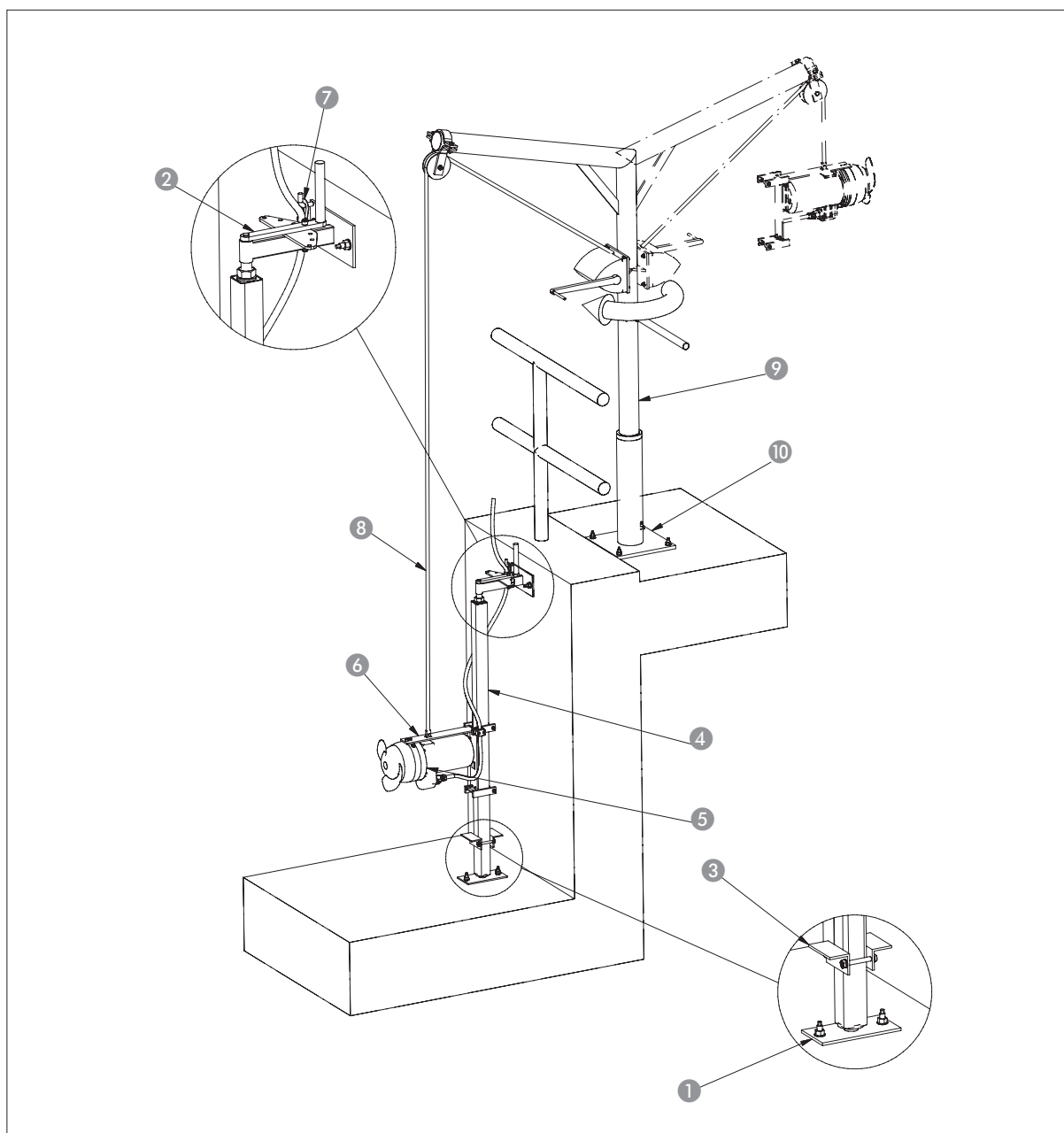
Fasten the mixer to the motor bracket (Item 12) as illustrated, using two cylinder head screws (Item 1), one cylinder head screw (Item 2) and the associated U-washers (Items 3 & 4). Additionally use a medium-strength thread locker to avoid an unintended release of the screws during operation. Lay the connecting cable between the pipe clamps (Item 6) and screw it to the motor bracket using two cylinder head screws and U-washers (Items 5 & 4). Great care should also be taken to ensure that the cable is always laid or assembled on a large radius, so that any sharp bend in the cable is prevented.



Lowering and guiding mechanisms

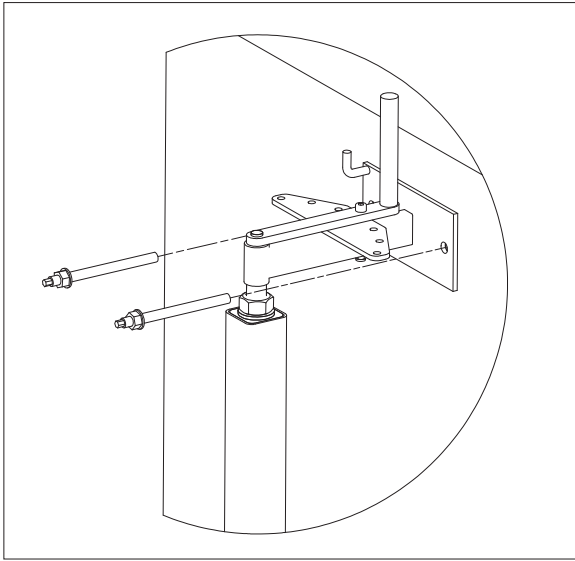
Before assembling the lowering and guiding mechanism, the local conditions governing installation (basin shape, circulation conditions etc.) must be ascertained.

It must be ensured that the mixer is freely mobile in the built-in condition and that additional fittings have no effect on flow.

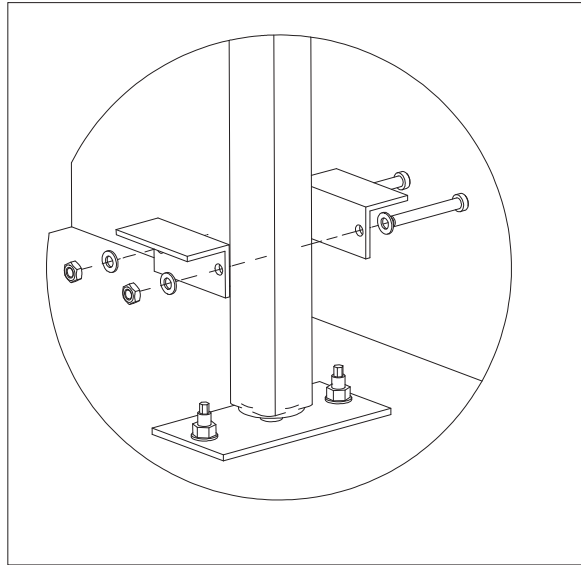


No.	Description
1	lower fastening
2	upper fastening
3	angel clamp bracket
4	square tube
5	mixer
6	motor bracket
7	cable anchor clamp
8	stainless steel wire
9	lifting gear
10	floor-mounted box column

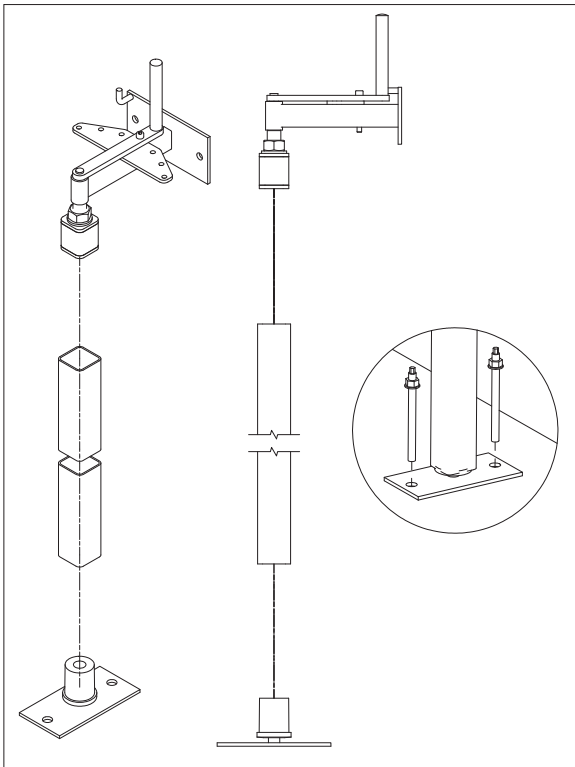
The upper fastening (Item 2) must be attached in the basin first of all. Use the supplied anchor rods and bonding anchor cartridges for this purpose.



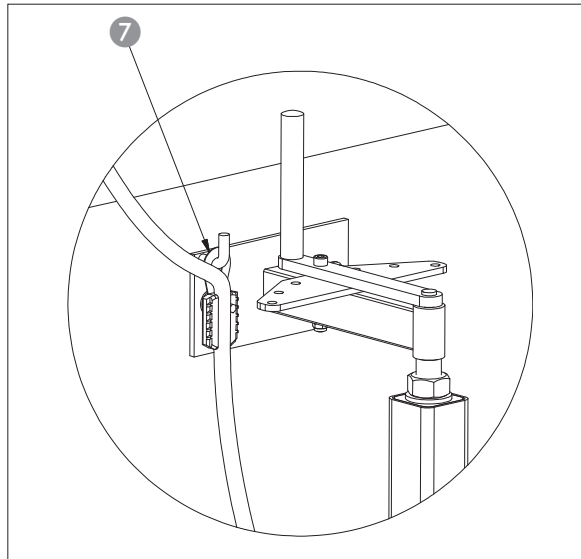
Now install the angle clamp brackets (Item 3). These represent the bearing point of the motor bracket.



In the next step, attach the square tube (Item 4, to be provided on site) to the upper and lower fastenings (Item 1). Next, hold the upper fastening on the anchor rods intended for that purpose and fasten the anchor rods with the nuts. The position of the lower fastening has now been determined. Use the supplied anchor rods and bonding anchor cartridges for fastening it.



Now lower the mixer on to the bracket in the basin. When the motor bracket lies on the angle clamp bracket, the connecting cable must be clamped in the cable anchor clamp (Item 7). At the same time it must be ensured that the cable is led upwards as tautly as possible so that it is not caught by the delivery flow.



5.3. Start-Up



The mixer must only be started when fully submerged, in order to prevent overheating of the motor.



Any change of mixer position must only be done with mixer having been switched off and propeller not rotating.



Before start up, check again that all steps of installation procedure have been properly carried out. Make sure that the mixer is sufficiently submerged (see chapter 8+9), and that there are no solid parts in the tank which might damage the propeller. Furthermore, it must be ensured that the mixer is immersed at least half the diameter of the propeller.

Make sure that all necessary safety precautions have been carried out, e.g. to prevent persons from falling into the tank. After longer standstill of the mixer, clean the propeller and motor surface from dried remains of mixing liquid in order to prevent cooling problems.

5.4. Electrical system

Observe the relevant local and national regulations when laying out and selecting the electric lines as well as when connecting the motor. The motor must be protected by a motor protection switch. Have the motor connected in accordance with the "Wiring connection" data sheet. Pay attention to the direction of rotation. If the direction of rotation is incorrect, the machine will not perform as specified, and under certain circumstances, can become damaged. In accordance with the machine data sheet, check the operating voltage and make certain that the current consumption remains uniform during all phases. Make sure that all temperature sensors and monitoring devices, are connected and that their function is tested. For details on this, see the wiring diagram.



Beware of electrical current! Incorrectly performed electrical work can result in fatal injury. This work may only be carried out by a qualified electrician.

5.5. Motor protection

The minimum requirement is a thermal relay / motor protection switch with temperature compensation, differential triggering and an anti-reactivation device in accordance with VDE 0660 or the appropriate national regulations. If the machines are connected to electrical systems in which faults frequently occur, we recommend installing additional protective devices (overvoltage, undervoltage or phase failure relays, lightning protection). Local and national regulations must be adhered to when connecting the machine.

5.6. Operation with a static frequency converter

The following points must be observed when operating the converter:

- The pump is suitable for operation with the frequency converter according to DIN EN 60034-17.
- Voltage peaks at the motor winding must be avoided and, where appropriate, suitable filters must be provided in the motor lead.

- The proper grounding of the entire system must be ensured.
- The specifications of the frequency converter manufacturer must be observed.
- Under certain circumstances, a shielded cable is necessary to comply with EMC directives.
- The information sheet "Using HOMA pumps with the frequency converter" must be observed.

5.7. Activation types

Activation types for cables with free ends (without plugs)

Star-delta activation

If the motor protection is installed in the line:

Set the motor protection to $0.58 \times$ the rated current. The maximum start-up time in star-delta mode is 3 seconds. If the motor protection is not installed in the line, set the motor protection to the rated current when fully loaded.

Starting transformer/soft start

Motor protection should be set to the rated current when fully loaded. At partial load, we recommend that motor protection is set 5% above the measured current at the operating point. The maximum start-up time at reduced voltage (approx. 70%) is 3 seconds.

Operation with frequency transformers

The machine can be operated on frequency transformers. Observe chapter 5.6 of this manual.

5.7.1. After Start-Up

The rated current is briefly exceeded during the start-up procedure. Once this process has ended, the operating current should no longer exceed the rated current. If the motor does not start immediately after the machine is switched on, it must be switched off immediately. The start pauses specified in the technical data must be adhered to before starting up again. If the fault recurs, the machine must be switched off again immediately. The machine may only be started again once the fault has been rectified.

The following items should be monitored:

- Operating voltage (permissible deviation $\pm 5\%$ of the rated voltage)
- Frequency (permissible deviation -2% of the rated frequency)
- Current consumption (permissible deviation between phases is a maximum of 5%)
- Voltage difference between the individual phases (max. 1%)
- Starts and stops per hour (see technical data)
- Minimum water immersion level, level control unit, dry-run protection
- Smooth running
- Check for leaks, if need be, follow the necessary steps as set out in "Maintenance"

6. Maintenance

6.1. General

The machine and the entire system must be inspected and maintained at regular intervals. The time limit for maintenance is set by the manufacturer and applies to the general conditions of use. The manufacturer should be consulted if the system is to be used with corrosive and/or abrasive pumped liquids, as the time limit between inspections may need to be reduced.

Note the following information:

- The operating and maintenance manual must be available to the maintenance personnel and its instructions followed. Only the repair and maintenance measures listed here may be performed.
- All maintenance, inspection and cleaning work on the machine and the system may only be carried out by trained specialists exercising extreme care in a safe workplace. Proper protective clothing is to be worn. The machine must be disconnected from the electricity supply before any work is carried out. There must be no way that it can be inadvertently switched on. Additionally, the appropriate protective measures as defined by the BGV/GNV should be enforced when working in basins and/or containers.
- Above a weight of 50kg, only hoisting gear which has been officially approved and which is in a technically perfect condition should be used for lowering and raising the machine.

Make sure that all fastening devices, ropes and safety devices of the hand winch are in a technically perfect condition. Work may only commence if the auxiliary hoisting gear has been checked and found to be in perfect working order. If it is not inspected, danger to personnel may result!

- Wiring work on the machine and system must be carried out by an electrician. For machines approved for work in areas subject to explosion danger, please refer to the "Explosion protection in accordance with the regulation" chapter.
- When working with inflammable solvents and cleaning agents, fires, unshielded lighting and smoking are prohibited.
- Machines which circulate fluids hazardous to health, or which come into contact with them, must be decontaminated. It must be ensured that no dangerous gases can form or are present.
- Ensure that all necessary tools and materials are available. Tidiness and cleanliness guarantee safe and problem-free operation of the machine. After working on the machine all cleaning materials and tools should be removed from it. All materials and tools should be stored in an appropriate place.
- Operating supplies such as oil and lubricants must be collected in appropriate vessels and properly disposed of (in accordance with the 75/439/EEC directive and with §55a, 5b AbfG). Appropriate protective clothing is to be worn for cleaning and maintenance jobs. This is to be disposed of in accordance with waste code TA 524 02 and EC Directive 91/689/EEC. Only lubricants expressly recommended by the

manufacturer may be used. Oils and lubricants should not be mixed. Only use genuine parts made by the manufacturer.

A trial run or functional test of the machine must be performed as instructed in the general operating conditions.



Before maintenance or repair disconnect the mixer from the power supply to prevent accidental starting of the mixer!



In accordance with the product liability law we point out that we shall not be liable for damages caused by our product due to unauthorized repair by persons other than the manufacturer or an authorized workshop or due to the use of spare parts other than original HOMA parts. The same product liability limitations are valid for accessories.



Before maintenance or repair make sure that all rotating parts stand still!



Before carrying out maintenance and service, the mixer must be thoroughly flushed with clean water.



When loosening of the oil chamber control screw, overpressure can escape. Release the screw only when pressure balance is secured.



If not otherwise stated, the torque values of the below tables should be used.

Values stated are for clean, lubricated screws.

Fixing torque [Nm] for screws A2/A4 (Coefficient of friction = 0,2)

	A2/A4, Hardeness class 70	A2/A4, Hardeness class 80
	DIN912/DIN933	DIN912/DIN933
M6	7 Nm	11,8 Nm
M8	17 Nm	28,7 Nm
M10	33 Nm	58 Nm
M12	57 Nm	100 Nm
M16	140 Nm	245 Nm
M20	273 Nm	494 Nm

6.2. Maintenance

It is imperative to keep a maintenance list to be always informed about the submersible mixer. This list must be presented to the trade association, the technical inspection agencies and the manufacturer of the system or of the mixer when requested.

The full warranty requires the annual inspection of the mixer by the manufacturer of the system or of the mixer.

6.2.1. General (monthly or every 500 operating hours)

Keep the agitator clean (otherwise cooling is impaired). Foreign bodies that have been picked up must be removed from the agitator. The connection cable must be examined for abrasions, traction marks, buckling and other damage. If the cable is defective there is a danger that the agitating medium may enter the agitator and cause damage. A defective cable must be immediately replaced by the manufacturer or an authorized workshop. The agitator must be checked for damage to the corrosion protection coating and for leaks.

6.2.2. Electric motor

The power consumption should be checked on a monthly basis in all 3 phases. Damage to the motor, transmission and storage can be recognized by the current consumption.

Lubrication: The roller bearings are lubricated for their lifespan (in case of noise, the bearings must be replaced at the manufacturer's factory). The oil in the oil chamber should be changed after each 6000 operating hours.

Oil condition: Lay the agitator horizontally, so that one of the oil chamber screws is on top. Remove the screw and remove a small amount of oil. If the oil is cloudy or milky, this indicates a defective shaft seal. In this case, have the condition of the shaft seals checked by a HOMA dealer or the customer service department. Replace missing parts.

Insulation test: If the insulation resistance is less than 2 megaohms, the submersible mixer can not be turned on. (Measuring DC voltage 1500 V)

6.2.3. Stirring Propeller

Inspection: Inspect the stirring propeller periodically. Remove random wound foreign bodies such as twines, cords, etc. They can cause uneven running and thus create strong vibrations in the system and can lead to damage on the mixer components. With uneven running, the stirring propeller must be cleaned.

6.3. Change of oil



Change oil only with motor at operation temperature. Note that the mixer must be in a horizontal position when changing oil.

When releasing the oil level screws, excess pressure may escape from the oil chamber or the gearbox. Only remove the screws completely after the pressure was equalized. The thread and the magnets (on the gearbox) of the screws must be clean before screwing them back on. The sealing rings must be always replaced with new parts.

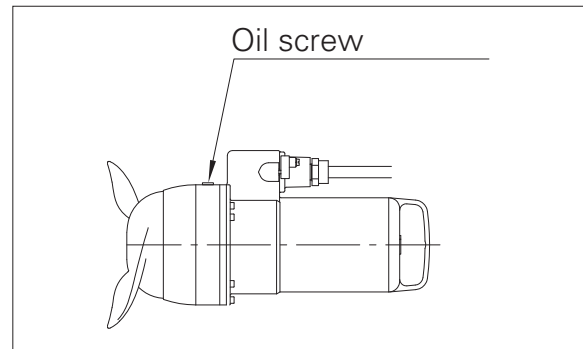
6.3.1 Oil chamber

Oil: biodegradable Shell Ondina 917. Used oil must be disposed of properly. The oil capacity is:

HRS07 - 27	0.7 l
HRS29 - 32	1.0 l
CHRS07 - 25	0.8 l
CHRS27- 32	1.1 l

Procedure:

1. Loosen the oil drain plug
2. Drain oil
3. Fill prescribed type and quantity of oil
4. Screw in the oil drain plug



7. Shutdown

7.1. Temporary shutdown

For this type of shutdown, the machine remains installed and is not cut off from the electricity supply. For temporary shutdown, the machine must remain completely submerged so that it is protected from frost and ice. Make sure the operating room and the pumped fluid cannot be covered by ice. This ensures that the machine is always ready for operation. During longer shutdown periods, carry out a regular (monthly to quarterly) function run for a period of 5 minutes.



Caution!

Only carry out a function run under the proper conditions of operation and use. Never run the machine dry. This can result in irreparable damage!

7.2. Final shutdown / storage

Switch off the system, disconnect the machine from the electricity supply and dismantle and store it. Note the following information concerning storage:



Beware of hot parts!

When removing the machine, be careful of the temperature of the housing components. These can heat up to well above 40°C. Let the machine cool down to ambient temperature before you touch it.

- Clean the machine.
- Store it in a clean, dry place, protect the machine against frost.
- Place it down vertically onto a firm foundation and secure it against falling.
- Seal the intake and discharge ports of pumps with suitable material (such as foil).
- Support the electric connecting lead on the cable lead-in to help avoid a permanent deformation.
- Protect the ends of the electric power cable from moisture.
- Protect the machine from direct sunshine as a preventive measure against brittleness in elastomer parts and the propeller and casing coating.
- When storing the machine in a garage please remember: Radiation and gases which occur during electric welding destroy the elastomers of the seals.
- During lengthy periods of storage, regularly (for example every six months) turn the impeller or propeller by hand. This prevents indentations in the bearings and stops the rotor from rusting up.

7.3. Restarting after an extended period of storage

Before restarting the machine, clean it of dust and oil deposits. Then carry out the necessary maintenance actions (see "Maintenance"). Check that the mechanical shaft seal is in good order and working properly. Once this work has been completed, the machine can be installed (see "Installation") and connected to the electricity supply by a specialist. See "Start-up" for instructions on restarting.

Only restart the machine if it is in perfect condition and ready for operation.

8. Additional for FM submersible pumps

8.1. GENERAL INSTRUCTIONS

This manual is intended to provide basic installation and start-up guidance. It is to be read and thoroughly studied prior to attempting to install or operate any of the equipment supplied. Equipment damage, which occurs by not following these instructions will void the warranty.

8.2. SAFETY PRECAUTIONS

Only trained qualified personnel shall be utilized for installation and start-up.

The following is a general list of safety precautions that should be followed when installation starting-up or servicing the pump.

The pump station owner or operator is ultimately responsible for ensuring that all equipment is installed, started up and operated in a safe manner.

- Do not work alone.
- Double check to make sure that all lifting equipment is in good working order and that it has adequate lifting capacity for the weight that it will handle.
- Wear safety helmet, goggles and protective shoes, or appropriate safety materials required.
- Before working on the pump make sure that the power is disconnected and cannot be energized by others. Lockout and tag the control panel circuit breaker.
- Do not stand under suspended loads!
- Never enter or work within a wet well without first checking to make sure sufficient oxygen is present and that there are no explosive or poisonous gases present.
- All personnel, who work with sewage pumping equipment and systems shall be vaccinated against diseases that can occur. If there are any questions or doubts in this area it is strongly suggested that the local health agency be contacted.
- For Hazardous Area Classifications, only use pumps with suitable Explosion Proof Rating.

8.3. EQUIPMENT INVENTORY AND INSPECTION

Upon arrival of pump shipment carefully unpack all components and compare with shipping and purchase order documents to ensure that the order is complete. Also inspect equipment for any damage that might have occurred in shipment. If any problems are detected contact an authorized HOMA customer service immediately.

8.4. TRANSPORTATION AND STORAGE PROCEDURE

Always lift the pump by its lifting bail or eye bolt.



Never lift the pump by its power cable! Jacketed pump should never stored or shipped with the pump by the jacket. Damage to Sealing O ring may result.

Pumps should be stored in an upright position, taking extreme care to protect the power cable and control cables from crushing, nicks or tears which would permit water intrusion. Power cable ends must be protected from immersion in water as well as moisture intrusion.

The cable will wick water into the pump if it is not protected properly. Power cable leads should be covered with shrink tubing or suitable sealing material during storage.

Short Term Storage: Short term storage is defined as any time less than six months. We recommend that pump and accessories be stored in its original shipping container in a dry, temperature controlled area. If climate controlled storage is not possible, all exposed parts should be inspected before storage and all surfaces that have the paint scratched, damaged or worn should be re-coated with air dry enamel paint. The pump should be stored in an upright position.

Long Term Storage: Any storage time exceeding six months is considered long term. In addition to the safeguards specified above, the impeller should be rotated once a month to prevent the mechanical seals from being damaged, and the pump should be inspected. The seal chamber oil should be drained and replaced prior to commissioning. The pump should be stored in an upright position.

8.5. ELECTRICAL INSTALLATION

8.5.1. GENERAL GUIDELINES

All electrical work shall be carried out under the supervision of an authorized, licensed electrician. **The present state adopted edition of the National Electrical Code as well as all local codes and regulations shall be complied with.**

8.5.2. VERIFICATION OF POWER SUPPLY

Prior to making any electrical connections or applying power to the pump, compare the power supply available at the pump station to the data on the unit's nameplate. Confirm that both voltage and phase match between pump and control panel. The voltage supplied at the pump shall be +5 / -10% of the nameplate value, frequency shall be + / - 1% of the nameplate value, the voltage phase balance shall be within 1% and the maximum corrected power factor shall be 1.0.

8.5.3. POWER LEAD WIRING

HOMA pumps may be provided with 1 or more cables, depending on motor horsepower and operating voltage. Power leads L1, L2, & L3 may be provided as single conductor, or as multiple conductors. Multiple conductor configurations may use leads from separate cables, or may use two conductors within one cable. Please refer to wiring diagram in the appendix for specific connection details.

The pump must be connected electrically through a motor starter with proper circuit breaker protection in order to validate warranty. Do not splice cables.

8.5.4. THERMAL SWITCH WIRING

Pumps are equipped with thermal switches embedded in the stator windings which are normally closed, automatically resetting switches. Switches will open when the internal temperature rises above the design temperature, and will close when the temperature returns to normal. Thermal switches must be wired to a current regulated control circuit in accordance with the NEC.

Identify thermal switch leads marked T1 and T3 in the power or control cable.

The resistance across the leads will be 0.5 Ohms. Thermal leads must be connected to the thermal overload relay located in the control panel. Thermal switch leads must be connected to validate warranty.

Note: All sizes of Class 1, Div. 1 pumps for hazardous service must have thermal switch leads connected to a current regulated control circuit in accordance with NEC.

8.5.5. SEAL PROBE WIRING

The mechanical seal leak detector probe utilized in the pump is a conductive probe which is normally open. The intrusion of water into the seal chamber completes the electrical circuit. Control panel provisions will sense this circuit closure, and will provide indication or alarm functions depending on the panel design. Either single or dual wire systems may be provided. Single wire systems utilize one energizing conductor, and the pump casing and neutral lead as the ground or return portion of the circuit. The dual wire systems utilize two separate conductors for each leg of the circuit.

With either system, the seal probe leads must be wired into a control circuit provided in the control panel. This control circuit must energize the probe with a regulated power source, and sense the closed circuit in event of water intrusion. Indication and alarm functions must also be provided in the control circuit. Please see control panel wiring diagram for seal probe connection points.



For Hazardous Area Classification Pumps, leak detector circuit must be in conformance with applicable NEC codes and regulations.

8.5.6. START / RUN CAPACITORS AND RELAYS:

All single phase motors require start and run capacitors along with a start relay to operate. Capacitors and relays must be sized for the specific motor.

Capacitors are sized based on ideal conditions.

The run capacitor may need to be resized to match the available field voltage. Each cap kit shipped is supplied with a wiring diagram and start up procedure.

8.5.7. Variable Frequency Drives

Special considerations must be taken when operating pumps with variable frequency drives (inverters). The inverter circuit design, horsepower required by pump, motor cooling system, power cable length, operating voltage, and anticipated turndown ratio must be fully evaluated during the design stage of the installation.

As a minimum, properly sized load reactors and filters must be installed between the inverter and the pump to protect the pump motor from damaging voltage spikes.

Warranty coverage will not be provided on any pump motor that is operated with a variable frequency drive, unless the load side of the inverter is properly isolated from the pump.

9. Connection of pumps and mixers



Danger from electric current!

Incorrect working with electric current brings danger to life! All pumps with bare cable ends must be connected by a skilled electrician.

9.1 Power cables

Pumps in Star 3-phase version

Cable identification Motor	Terminal in control cabinet
U1	U1
V1	V1
W1	W1
U2	U2
V2	V2
W2	W2

Pumps in Direct start version

Cable identification Motor	Terminal in control cabinet
U	U1
V	V1
W	W1

9.2 Control cables

Depending on the design of the pump/agitator, it may be that no separate control cable is used. In this case monitoring devices are run from the power cable.

Cable identification Motor	Monitoring system
Monitoring in winding	
T1 / T2	Temperature limiter (2 switches in series)
T1 / T4	Temperature controller (2 switches in series)
T1 / T2 / T3	Temperature limiter and controller
K1 / K2	PTC – Thermistor (3 thermistors in series)
PT1 / PT2	3 x PT100 individually installed
PT3 / PT4	
PT6 / PT6	
Bearings monitoring	
P1 / P2	PT100 upper bearing
P3 / P4	PT100 lower bearing
Seal monitoring	
S1 / S2	Seal monitoring in oil chamber
S3 / S4	Seal monitoring in connection compartment
S5 / S6	Seal monitoring in Motor compartment with 2 Electrodes
S7 / S8	Seal monitoring in Motor compartment with float switch
S9 / S10	Seal monitoring in Gearbox (Agitator)
S11 / S12	Seal monitoring in Leakage compartment (internal cooling)
Heating	
H1 / H2	Heating system

[illegible]

10. Declaration of Contamination

The repair if the instruments can only be accomplished if this document is filled out completely and accurately.

ANSWER by FAX: HOMA Pumpenfabrik GmbH: ... +49 (0) 2247 702 - 44

Pump data:

Type: _____

Part No: _____

Serial no: _____

Reason for return: _____

Contamination of the instruments:

toxic	no <input type="checkbox"/> yes <input type="checkbox"/>	substance: _____
corrosive	no <input type="checkbox"/> yes <input type="checkbox"/>	substance: _____
microbiological	no <input type="checkbox"/> yes <input type="checkbox"/>	substance: _____
explosive	no <input type="checkbox"/> yes <input type="checkbox"/>	substance: _____
radioactive	no <input type="checkbox"/> yes <input type="checkbox"/>	substance: _____
other substances	no <input type="checkbox"/> yes <input type="checkbox"/>	substance: _____

Legally binding declaration:

We hereby certify that the returned parts have been cleaned carefully. To the best of our knowledge, they are free from any residues in dangerous quantities.

Company: _____

Street: _____ Zip code, City: _____

Contact person: _____

Phone: _____ Fax: _____

e-mail: _____

Date Company stamp and signature



HOMA Pumpenfabrik GmbH

Industriestraße 1 ➤ 53819 Neunkirchen-Seelscheid

Telefon: +49(0)2247/702-0 ➤ Fax: +49(0)2247/702-44

e-Mail: info@homa-pumpen.de ➤ Internet: www.homa-pumpen.de

